

focus on QUALITY

Our top priority remains complete client satisfaction. Stakeholder interest remains in constant focus. Have won widespread recognition for quality and caliber of our services over the years - backed by expert management systems in line with ISO 9001. From the very outset of every project we work closely with our clients to tailor our services to their exact requirement and deliver the project with highest possible standards.

Demonstrating our complete and total commitment to quality and client satisfaction at the threshold of repeat business.

we DELIVER

- Innovation
- Sustainable Solutions
- Excellence
- Partnership for Success

we are DIFFERENT

- Multi sectoral and multi skill
- Local but with global experience
- Leading in International standard Safety measures
- Give primacy to Stakeholder Interest

how we make a DIFFERENCE?

- One of Pakistan's leading engineering management consultancy.
- Engaged in development and influencing diverse aspects of everyday life from transport, industry and utilities to water and environment.
- Company with over 500 staff members equipped with strong values, structure and systems support.
- Our in-house expertise and resources cover full spectrum of engineering and associated disciplines.
- Our integrated quality assured one-stop services to clients from concept stage to completion.
- We comprehend client and stakeholder needs, add value to their business through our solutions and deliver projects with efficiency.
- MMP is part of an international Consultant Group M/s Mott Macdonald, UK and can draw on the skills and expertise from its International partners to benefits of our valued clients.



DEVELOPMENT SERVICES



We believe that Development is about transforming the lives of people, not just transforming economies.

**Key IFI Partners
in
Development Services**



ISLAMIC DEVELOPMENT BANK



ASIAN DEVELOPMENT BANK



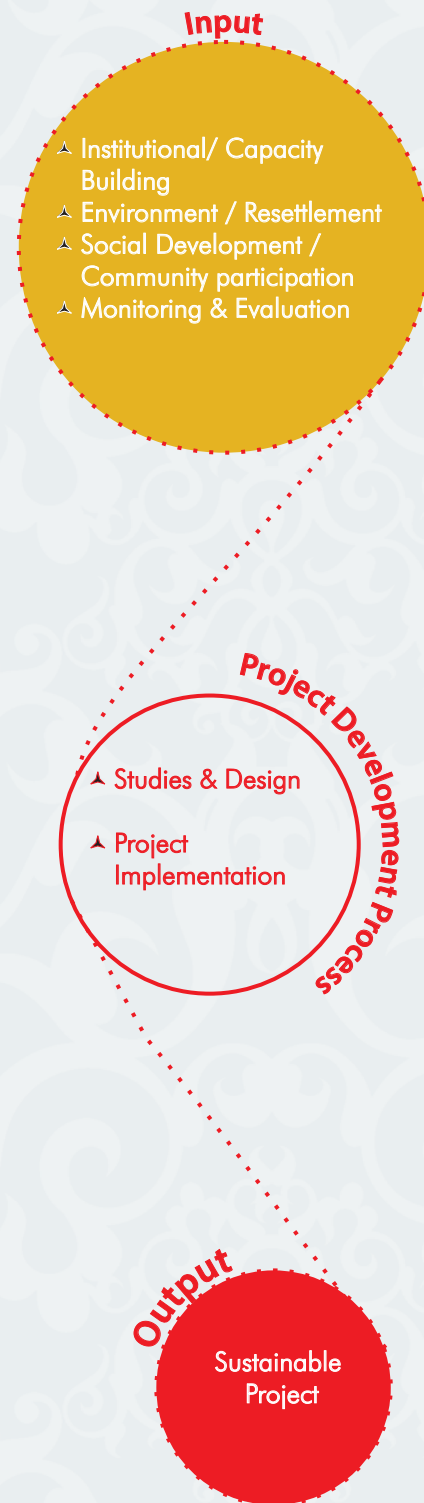
JAPAN BANK FOR INTERNATIONAL COOPERATION

DFID Department for International Development



USAID
FROM THE AMERICAN PEOPLE

“ Integrated approach through technical, institutional, social, and environmental aspects of projects leading to a streamlined project delivery process resulting in sustainable outcomes is the key to our Development Services. ”



WATER SECTOR IMPROVEMENT PROJECT - WSIP

A part of WSIP investment aimed at improving irrigation at minors/distributary level. Through social mobilization and actively community participation, we were successful from planning to design and execution in 120 distributaries.

The works executed as per farmers needs and generated ownership through Farmers Organization.

SIDA / WB
2009 - 2014

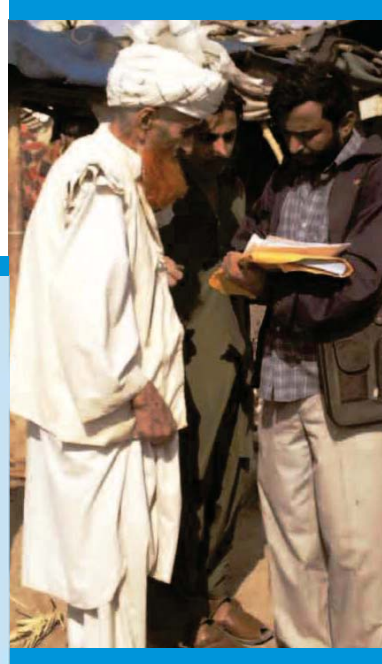


RECONSTRUCTION OF HOUSING FOR THE VICTIMS OF THE 2005 EARTHQUAKE

The devastating earthquake brought tremendous destructions and miseries in the worst hit areas of the quake.

Over 3.5 million people became homeless. Review of plans for more than 70,000 housing units reconstructed under the Islamic Development Bank Housing Project and suggesting of ways of effectively involve the community in implementation of the plans.

Govt. of Pakistan / IDB
2006 - 2008



FORDWAH EASTERN SADIQIA CANAL LINING COMPONENT

The project involved working with the community in Canal Command Area for the development of Canal lining systems to reduce seepage and water logging.

Lining of 200 Kms of Irrigation canals of 7100 cusecs discharge.

Irrigation Deptt. / WB
1994-1999



NATIONAL PROGRAMME FOR IMPROVEMENT OF WATER COURSES NPIW

The program aims at lining of 3300 water courses alongwith an estimated capital outlay of more than 14 billion. MMP remained involved as consultant to the programme for more than 6 years.

Our assistance enabled the farmers to take collective decisions in planning and organizing resources at farm level. The entire programme implementation was based on community participation approach.

SIDA / Govt. of Pakistan
2006 - 2008

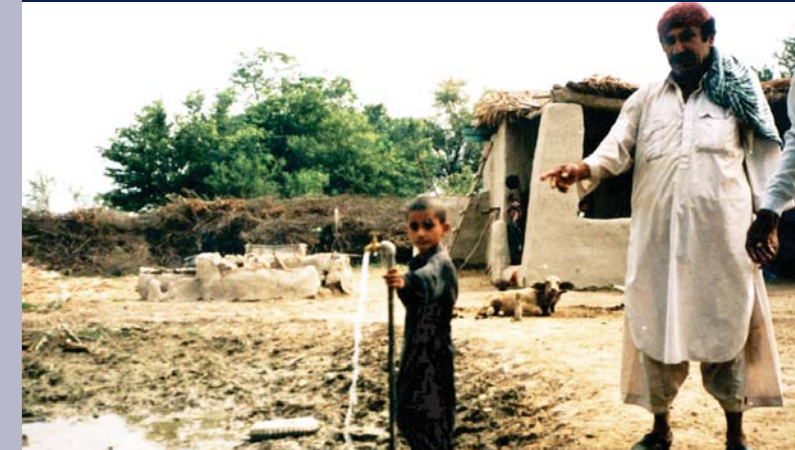


SINDH RURAL WATER SUPPLY AND SANITATION PROJECT

We provided service through technical assistance to the Public health Engineering Department to develop water supplies and drainage schemes throughout Sindh with community participation, along with training in community development and hygiene education.

Our experience in transforming community based Sindh Rural Water Supply & Sanitation project, where the community took an active part in developing schemes and providing O&M services in noteworthy.

Govt. of Pakistan / WB
1992-1999





social DEVELOPMENT/ COMMUNITY participation

NO LARGE SCALE PROJECT CAN ATTAIN SUCCESS
WITHOUT ACTIVE COMMUNITY PARTICIPATION FOLLOWED BY
PROPER INPUT, TRAINING AND SUSTAINABLE SKILL TRANSFER.

MMP ensures that real benefits are ultimately delivered to intended stakeholders on projects through an approach which promotes open participation, planning, ownership and self-sustaining growth.

DID YOU KNOW

WE HAVE BEEN DEVELOPING ENGINEERING PROJECTS BY INCORPORATING COMMUNITY PARTICIPATION AND SOCIAL MOBILIZATION STRATEGIES DURING PROJECT PLANNING & IMPLEMENTATIONS TO ENSURE PROJECT SUSTAINABILITY.

Projects	Social Surveys	Monitoring Reporting	Community Participation	Baseline Studies	Social Mobilization	Stakeholder's Consultation
Extension of RBOD	✓	✓	✓	✓	✓	✓
Peshawar Valley Industrial Effluent	✓			✓	✓	✓
Sindh Water Courses Improvement	✓	✓	✓	✓	✓	
D.G. Khan Hill Torrents	✓		✓	✓	✓	✓

“

Being part of the Mott Macdonald Group makes MMP especially capable of promoting its development services by utilizing expertise from resource centres available within the Group across the Globe.

”

“

Two and a half decades of involvement in formulating strategies, project preparation, studies, design and construction, MMP's capability is unmatched. We attach great importance to environmental, economic and social issues.

”

“

Providing effective and efficient Public Service is of great importance and is a herculean undertaking. MMP is proud to have taken up such challenges through their involvement in diverse sectors and provided sustainable, specific and productive outcomes, while transferring technology to client's and the community.

”

MONITORING & EVALUATION



STRENGTHENING OF ENVIRONMENTAL MANAGEMENT FOR WATER RESOURCES PROJECT

The project involved creating and institutional strengthening of WAPDA environment cell, along with environmental and GIS training and development approaches to environmental assessment for water resource projects.

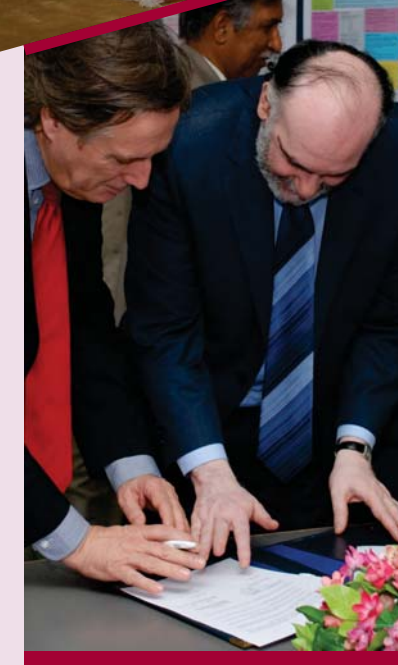
WAPDA / ADB
1992 - 1994



PUBLIC - PRIVATE PARTNERSHIP POLICY FOR PAKISTAN RAILWAYS

Prepare a Public Private Partnership Policy Framework for Pakistan Railway includes procedures for implementation of policy including interaction with the private sector, other GOP organizations and capacity building for PPP procurement.

Govt. of Pakistan / WB
2010 - 2011



PAKISTAN TEACHERS TRAINING PROGRAMME

Managing and Implementing technical assistance component of large teacher training umbrella project. Assistance in project management, curriculum development, assessment and educational technology.

Govt. of Punjab / ADB
1997 - 1998

INSTITUTIONAL ASSESSMENT OF INDUS RIVER SYSTEM AUTHORITY (IRSA)

Identifying future capacity and resources to enable IRSA allocate water resources effectively and fairly to water users against a background of varying water availability, caused by climate change, and growing water demand from irrigation, hydropower, industrial, domestic and environmental sectors.

Govt. of Pakistan / WB
2010 - 2011





Institutional Strengthening / Capacity Building

MMP projects are designed to embrace organizational and Institutional strengthening. Our projects serve to empower clients and stake holders through access to information.

THIS BELIEF IS VISIBLE THROUGH OUR INVOLVEMENT ON PROJECTS FOR PUBLIC SECTOR SERVICE DELIVERY IMPROVEMENT FOR THE VARIOUS GOVERNMENT INSTITUTIONS.

DID YOU KNOW

WE HAVE BEEN IN FOREFRONT IN THE FIELD OF CAPACITY BUILDING OF INSTITUTIONS AND ASSISTING PUBLIC SECTOR CLIENTS IN DEVELOPING KEY POLICY FOR INSTITUTIONAL IMPROVEMENTS AND PERFORMANCE.

Projects	Institutional Strengthening	Monitoring Reporting	Policy Studies	Training	Stakeholder's Consultation
Pakistan Flood Resilience Studies	✓	✓		✓	✓
Punjab Devolved Social Studies	✓	✓	✓		✓
Technical Resource Facility	✓	✓	✓	✓	✓
Pakistan Education Reform	✓		✓	✓	✓

MMP places a strong emphasis on developing systems and mechanisms for performance information to enhance effectiveness of all components of a development program.

We have a wide range of expertise to offer technical advice and protect investor interest during project lifetime, providing baseline studies and developing mechanism for monitoring against project objectives, operational progress and guidance on related issues.

This expertise led to MMP's appointment as four time M&E consultant on World bank funded projects in last twenty-five years.

3

DID YOU KNOW

WE HAVE BEEN SERVING OUR CLIENTS CONTINUOUSLY FOR MORE THAN TWO DECADES IN MONITORING & EVALUATION SERVICES ON PROJECTS. WE ENJOYED STATUS OF SPECIALIST M&E CONSULTANT.

1 Impact Evaluation of Second Scarp Transition Project (SSTP)

The project covered impact evaluation, involving long term monitoring of groundwater levels and salinity. The effects of tube well privatization were also evaluated.

Institutional finance for tube well privatization was monitored and evaluated, alongwith cropping studies, financial position of the farmers, and sociological needs of project implementation.

Govt. of Punjab / WB
1995 - 1997

2 Punjab Private Sector Ground Water Development Project

The project covered impact evaluation of drainage tubewells, taking care of the social aspects on financial viability, effects on small farmers, community participation and economic viability.

Govt. of Punjab / WB
1997 - 2002

3 Sindh On-Farm Water Management Project

Monitoring & Evaluation of sociological, agronomic, physical and economic aspects of existing irrigation system and proposed interventions to access the potential of sustainability, institutional capacity building of Water Course Association (WCAs) and performance of Farmer Organizations (FOs).

Govt. of Sindh / WB
2005 - 2009

4 Punjab Barrages Improvement Project (PBIP-II)

Engaged in M&E including progress monitoring for the modernization of Jinnah Barrage for over 2.1 million acres of farmland benefiting about 6,00,000 farm families for irrigation and domestic water users.

Govt. of Punjab / WB
2011 - 2016

Earthquake Rehabilitation Works

We rendered M&E services to Islamic Development Bank for the housing reconstruction program in far flung areas of KPK & AJK for the victims of 2005 earthquake from 2006 to 2008.



National Cash Transfer Program

Partnering with BMB Mott Macdonald on DFID funded 3 year (2013-2016) National Cash Transfer Program under Benazir Income Support Program M&E services are being extended in four provinces to determine progress on targeting, enrolment, payment mechanism and grievance process.



ENVIRONMENT / RESETTLEMENT

MMP's "Change Agent" has helped numerous communities and stakeholders come together as partners in national progress, conserving social and physical environment. ADB and WB funded irrigation and rehabilitation projects of upgrading the Balloki and Lower Bari Doab Canal are sterling examples.

MMP specialists work in collaboration with communities to ensure resettlement creates an opportunity to promote sustainable development.

DID YOU KNOW

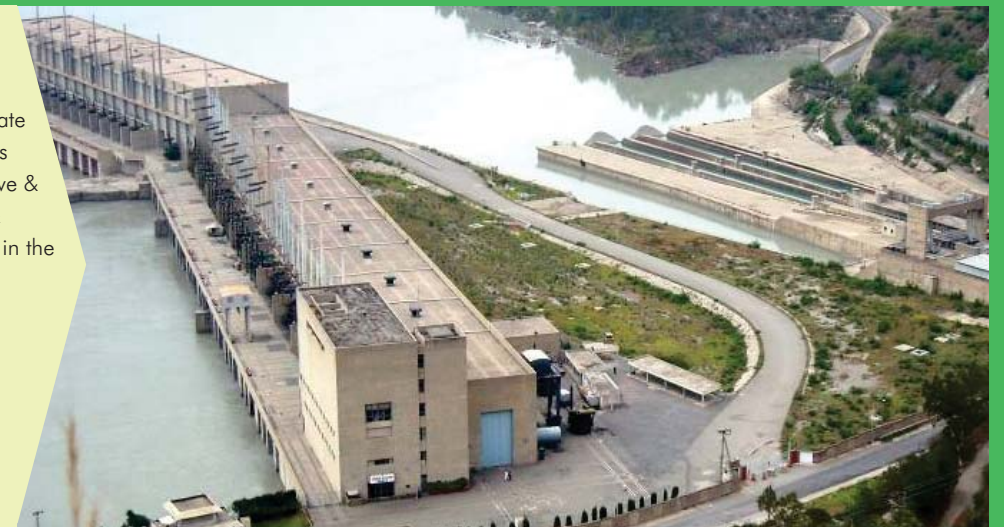
WE HAVE BEEN WORKING TO IMPROVE ENVIRONMENT AND ADDRESS RESETTLEMENT ISSUES ON PROJECTS IN WATER, TRANSPORT AND ENERGY SECTORS, IN KEEPING WITH INTERNATIONAL STANDARDS AND PRACTICES.

Projects	Social Surveys	EIA	EMP	Resettlement Studies	Baseline Studies	Stakeholder's Consultation
Satpara Dam Command Area	✓	✓	✓	✓	✓	
Thar Coal Studies	✓	✓		✓	✓	✓
Sindh Cities Improvement Project	✓	✓	✓	✓	✓	
Extension of RBOD	✓	✓	✓	✓	✓	✓

Tarbela 4th Extension HP Project

The main aim of environmental assessment of the project is to evaluate the nature and scale of likely impacts arising from the development (positive & negative, short & long term, direct & indirect), to involve the stakeholders in the required consultation process.

Govt. of Pakistan / WB
2010-2012



Sindh Cities Improvement Project

SCIP is to improve basic Urban infrastructure in Sindh's secondary towns. We developed water & solid waste management master plans and prepared environmental and social safeguards documentation along with land acquisition, resettlement and social assessments.

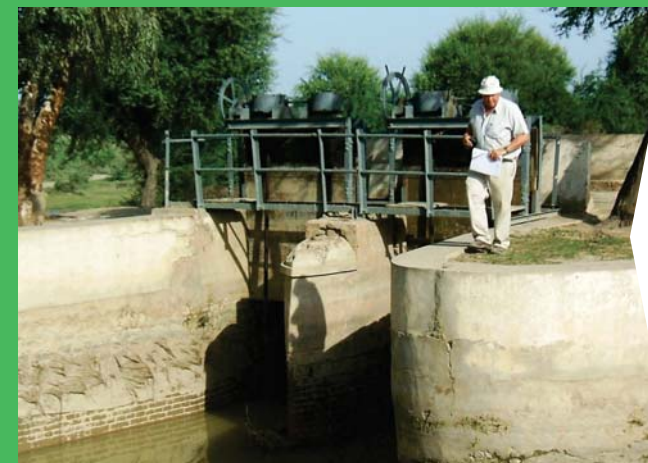
Govt. of Sindh / ADB
2011-2013



Sindh Water Sector Improvement Project (WSIP-1)

Assistance and Support to the Sindh Irrigation and Drainage Authority and Area Water Boards for Institutional reforms during the Improvement and rehabilitation of irrigation systems in Sindh. The job includes development of an Environmental Assessment and Environmental Management Plan and Social Impact Assessment and Resettlement Action Plan.

Sindh Irrigation and Drainage Authority / WB
2009-2014



Karachi Circular Railway

Government of Pakistan decided to revive Karachi Circular Railway as modern commuter system for the citizens of Karachi. The existing KCR route has squatters on the proposal ROW and the mandatory requirement of the Donor Agency was to carry out Resettlement Action Plan (RAP) study for the project affected persons (PAPS). The Resettlement site for PAPS has been allocated at Juma Goth adjacent to Shah Latif Township.

Govt. of Pakistan / JICA
2011-2012